



# California-Baja California Land Port of Entry Update

*U.S. General Services Administration*

*July 19, 2018  
Tijuana, Mexico*



# San Ysidro LPOE Master Plan

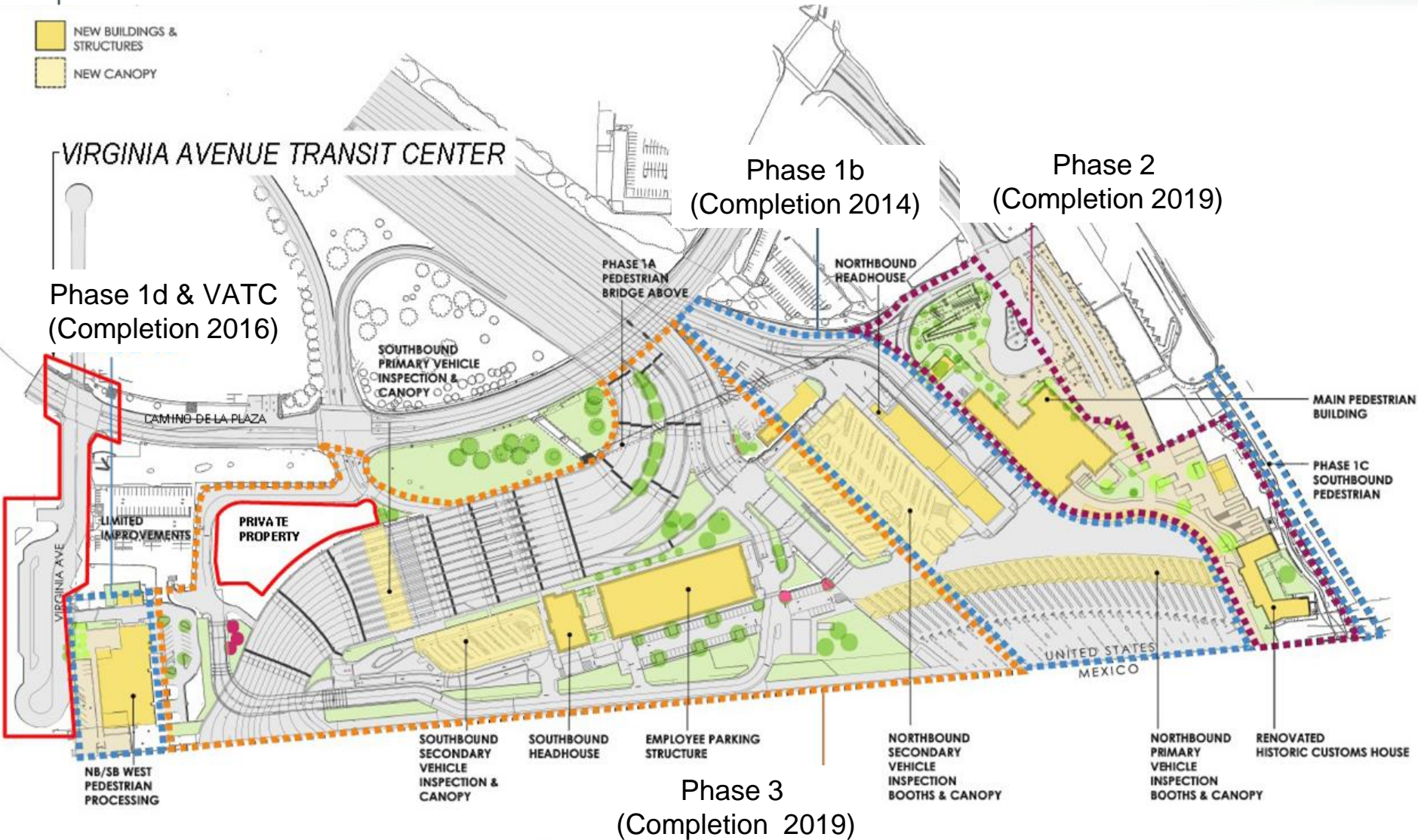






# San Ysidro LPOE Master Plan

- NEW BUILDINGS & STRUCTURES
- NEW CANOPY



# San Ysidro Phase 2 Project Scope

- New Northbound Pedestrian Building
  - 22 Northbound Pedestrian Processing Lanes
- Historic Customs House Renovation & Southbound Addition
  - 4 Southbound Pedestrian Processing Lanes
- Pedestrian Plazas and New Southbound Route
- 1 Dedicated Northbound Bus Lane





# Design Main Pedestrian Building North Elevation





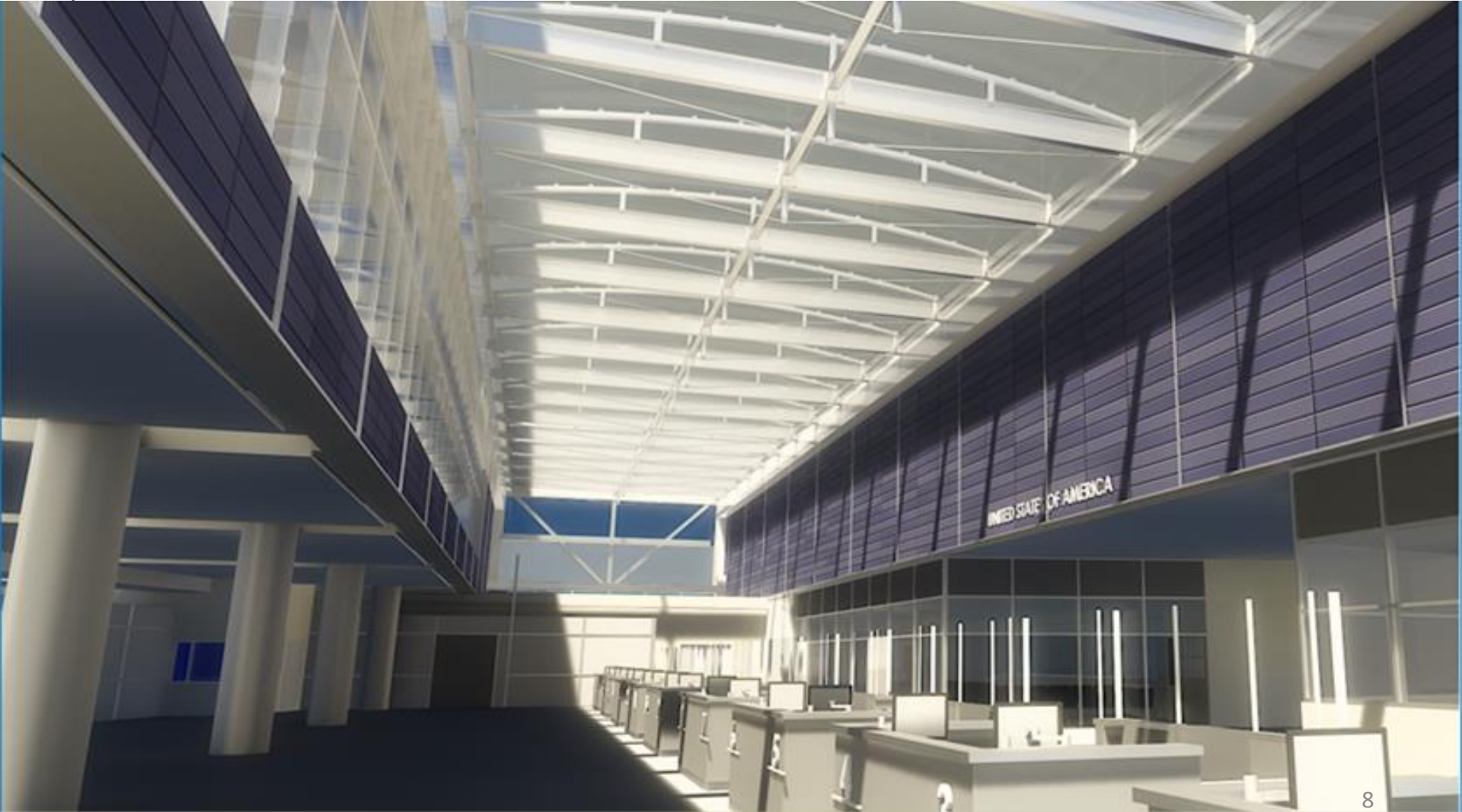


# Construction Progress Main Pedestrian Building North Elevation





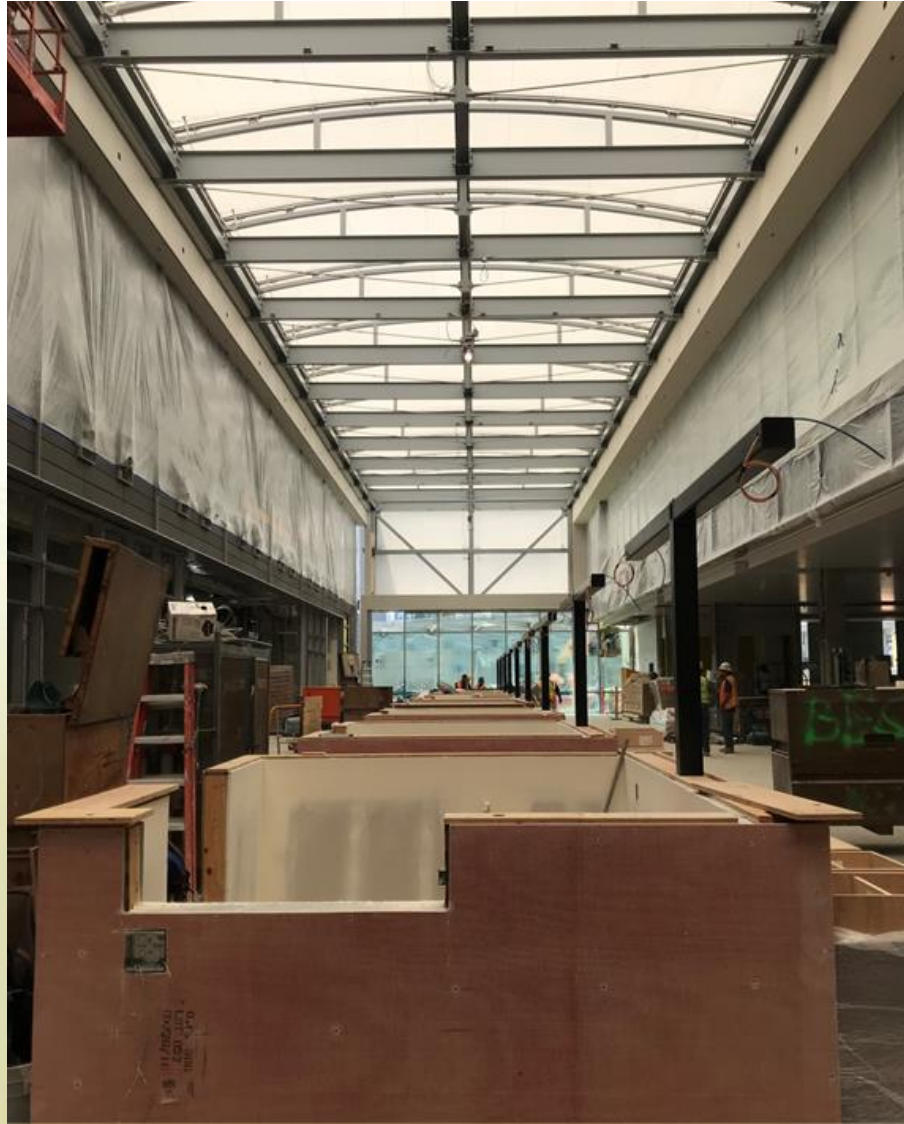
# Design Northbound Pedestrian Processing







# Construction Progress Northbound Pedestrian Processing





# Design Southbound Pedestrian Processing







# Construction Progress Southbound Pedestrian Processing







# Construction Progress Looking South



## Summer 2018 Completion

- New Northbound Pedestrian Building Opening
  - 22 Northbound Pedestrian Processing Lanes
- 1 Dedicated Northbound Bus Lane

## Spring 2019 Completion

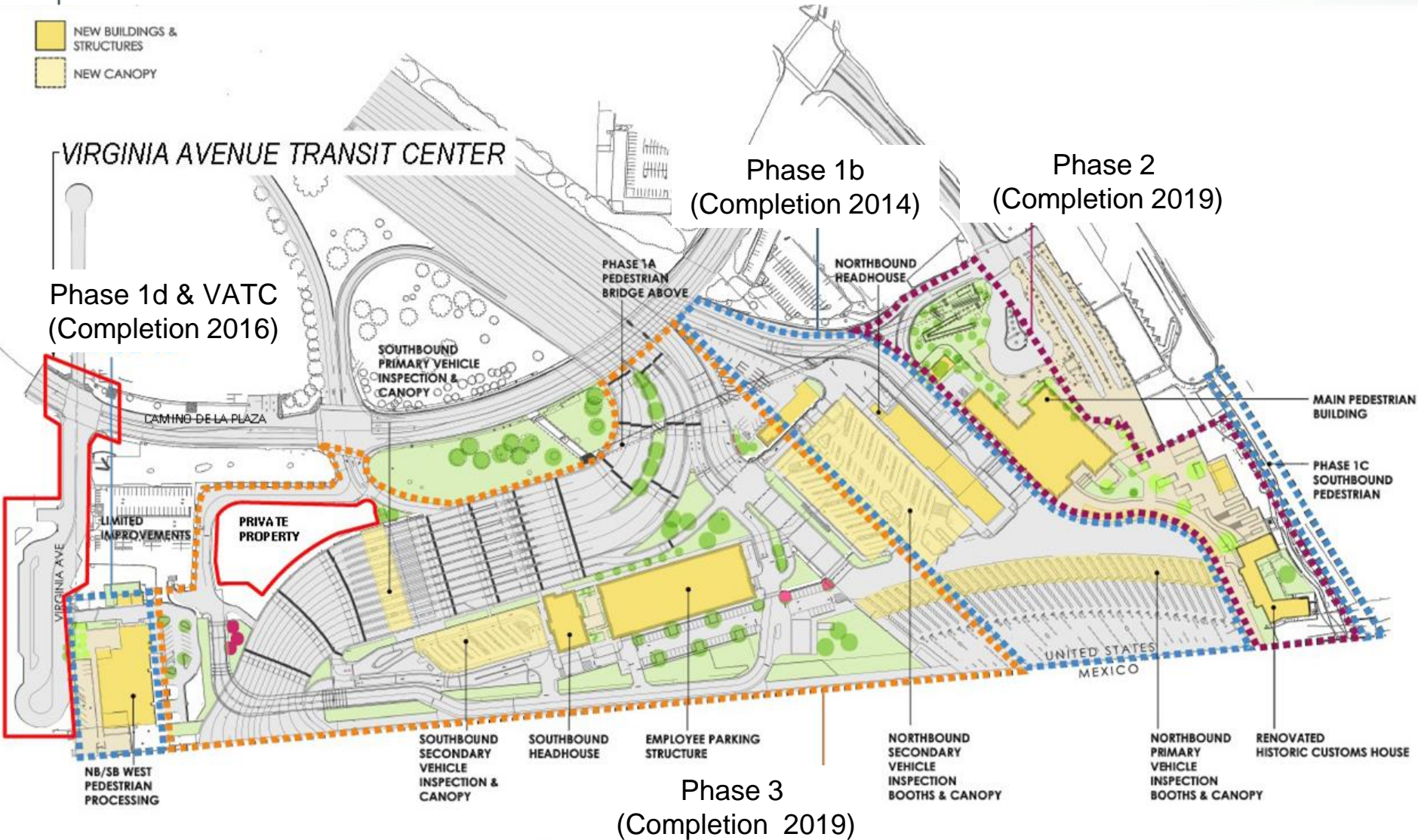
- Historic Customs House Renovation & Southbound Addition
  - 4 Southbound Pedestrian Processing Lanes
- Pedestrian Plazas and New Southbound Route





# San Ysidro LPOE Master Plan

- NEW BUILDINGS & STRUCTURES
- NEW CANOPY





# San Ysidro Phase 3 Project Scope

- Adds 10 Southbound (SB) lanes of vehicular throughput; and 8 Northbound (NB) lanes of vehicular throughput with 15 NB Primary Canopy vehicular inspection booths
- SB Primary, SB Secondary Canopy and SB Headhouse
- Employee parking structure
- Expansion of NB Primary & Secondary Canopies, NB Support Building & Employee Access
- Geo-Exchange system and photovoltaics



# San Ysidro Phase 3 Project Schedule

- Design Start March 2014
- Design Completion July 2015
- Construction Start August 2016
- Construction Completion Q4 2019



# Phase 3 Proposed Southbound Lanes







# Prior to Start of Phase 3 Work





# San Ysidro Phase 3 Progress Photos





# Employee Parking Structure







# Southbound Primary Canopy Lift





# Parking Structure & Southbound Headhouse







# Southbound Headhouse







# Phase 3 Aerial Photo







# Phase 3 Interim Curve to Mexico

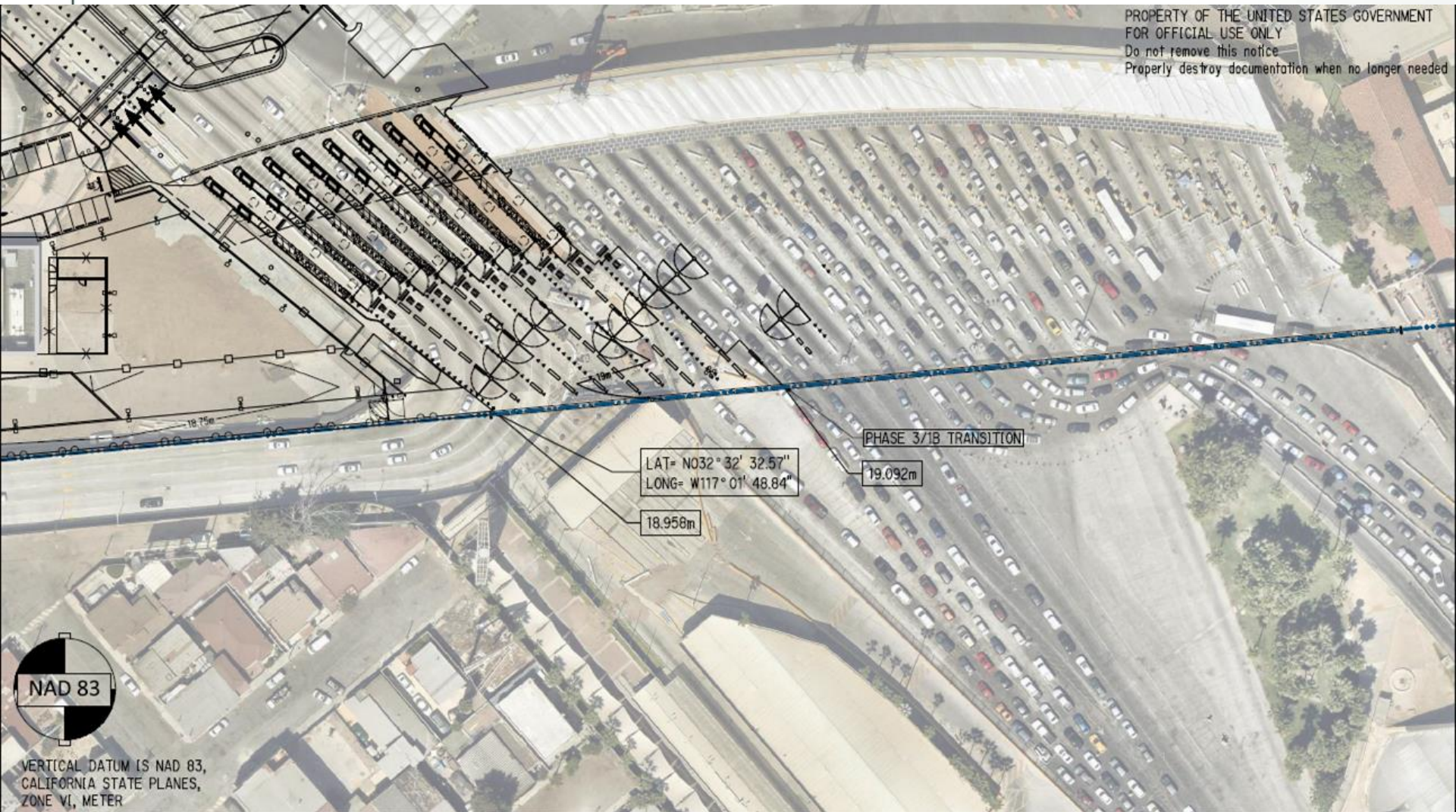






# Phase 3 Northbound POV Realignment

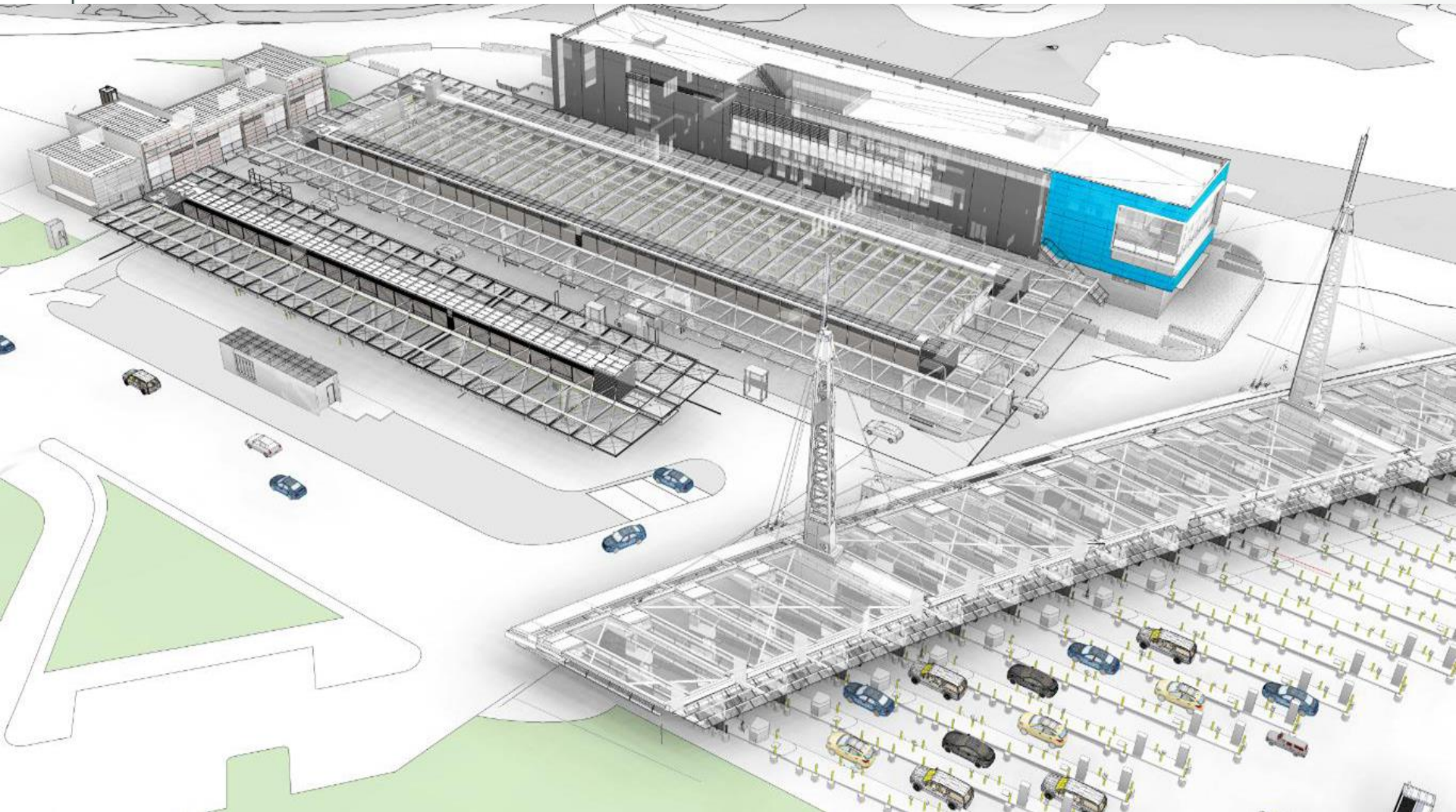
PROPERTY OF THE UNITED STATES GOVERNMENT  
FOR OFFICIAL USE ONLY  
Do not remove this notice  
Properly destroy documentation when no longer needed







# Phase 3 Extension of Northbound Primary POV & Secondary Inspection





## Phase 3 Schedule Summary

<b>Open Temp SB I-5 Reroute</b>	<b>Q3</b>	<b>2017</b>
<b>SB I-5 Realignment Start</b>	<b>Q3</b>	<b>2017</b>
<b>SB I-5 Realignment Finish</b>	<b>Q1</b>	<b>2019</b>
<b>New NB Lanes Start</b>	<b>Q2</b>	<b>2019</b>
<b>New NB Lanes Finish</b>	<b>Q4</b>	<b>2019</b>
<b>Construction Completion</b>	<b>Q4</b>	<b>2019</b>





# Phase 3 at Completion





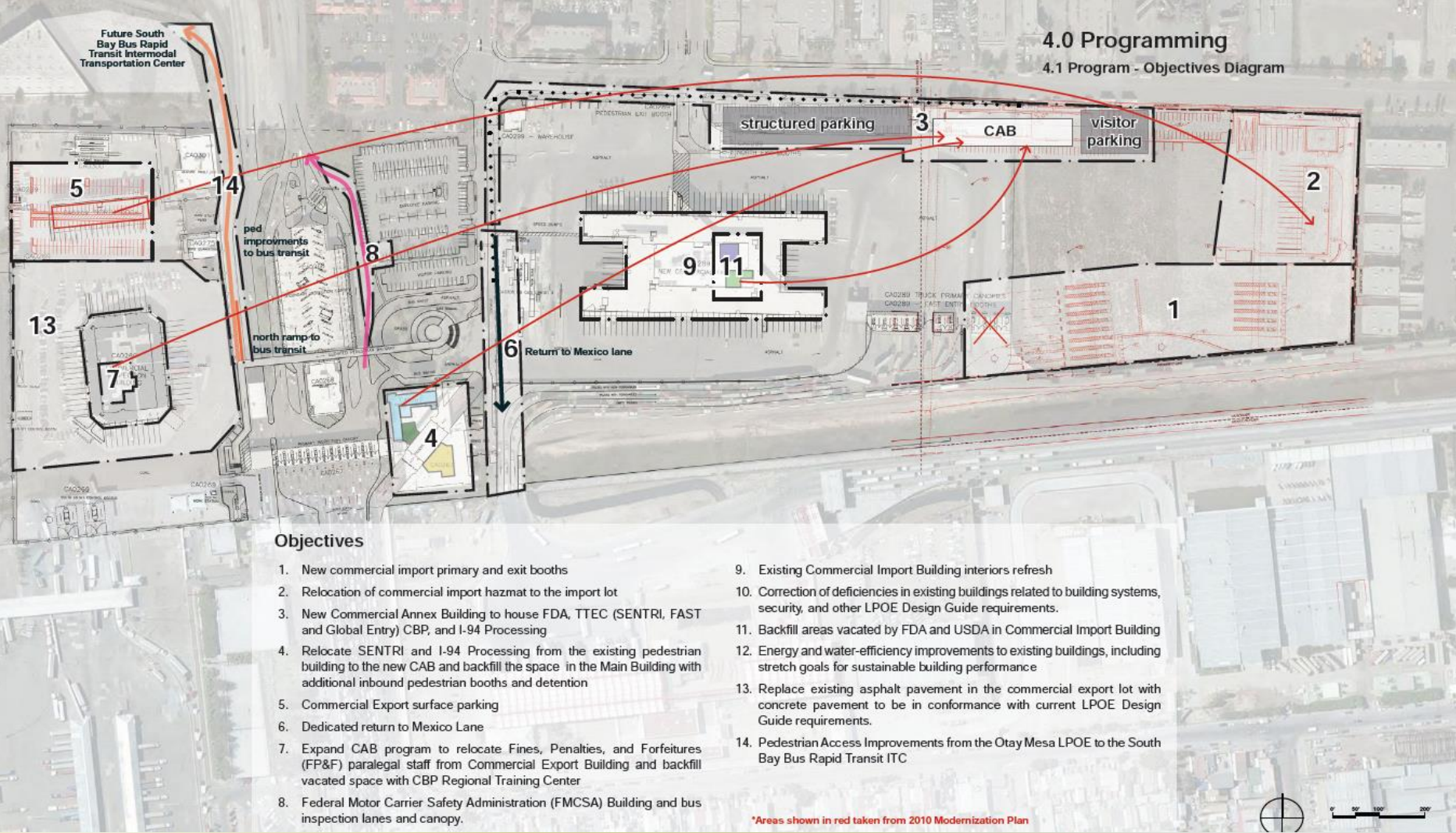


# Otay Mesa LPOE

*U.S. General Services Administration*

*July 9, 2018  
Tijuana, Mexico*

# Project Scope Diagram







# Planned Otay Mesa Schedule

<b>Funding Authorization</b>	<b>Q3/4</b>	<b>FY2018</b>
<b>Design-Build Solicitation</b>	<b>Q4</b>	<b>FY2018</b>
<b>Award Design-Build</b>	<b>Q2</b>	<b>FY2019</b>
<b>Construction completion</b>	<b>Q2</b>	<b>FY2022</b>

## *QUESTIONS*

**Ramón D. Riesgo**

U.S. General Services Administration

333 West Broadway, Suite 1001

San Diego, CA 92101-8843

Tel.: 619.557.5092

Fax: 619.557.7335

[ramon.riesgo@gsa.gov](mailto:ramon.riesgo@gsa.gov)

[www.gsa.gov](http://www.gsa.gov)